

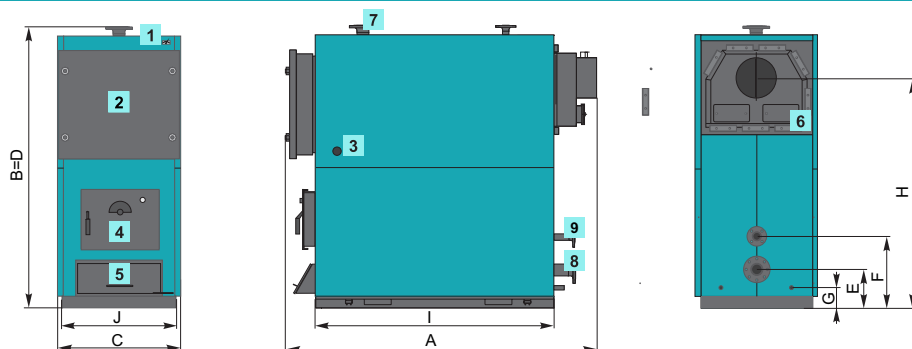


- The steel boilers **EKO-CKS** (nominal heat output **150 to 380kW**) are engineered to be connected to open central heating systems, for solid fuel firing and the heating of middle sized to large premises. They can be installed with direct connection to a chimney, or with connection through a cyclone and fan(only **EKO-CKS 250,300,350**).
- They offer a successful combination of modern design and high tech and high quality materials, as well as easy assembly and operation. The extensive application of thoroughly tested technical solutions and high quality materials, make these boilers safe and reliable. Steel boilers for central heating systems engineered for wood/coal firing (nominal heat output **150-380 kW**).

- A carefully sized combustion chamber with triple pass flue gas flow assures boiler operation at high efficiency. This makes the boiler very economical to use.
- The large door and combustion chamber enable firing with big pieces of wood, as well as easy cleaning and maintenance.
- The big upper door enables easy and quick cleaning from the front side of the boiler.
- The body of the boiler is delivered separately from the casing with thermal insulation enabling easier transportation and assembly with minimum risk.
- An advantage with these boilers is the possibility of fitting the casing after connection to the installation.
- These boilers are connected to open central heating systems.
- There is the option to build in a cyclone and flue gases exhaust fan(only **EKO-CKS 250,300,350**).
- The boilers are manufactured in compliance with ISO 9001 and ISO 14001.

Technical specifications

- 1 Thermometer
- 2 Upper door
- 3 Opening for draught regulator
- 4 Lower door
- 5 Primary air door/cleaning
- 6 Opening for cleaning the smoke chamber
- 7 Water boiler inlet
- 8 Boiler outlet
- 9 Connections for the open expansion vessel



EKO-CKS		150	200	250	300	380
Heat output range	kW	110-150	150-200	200-250	250-300	300-380
Boiler water content	l	380	520	790	963	1155
Boiler mass	kg	812	1027	1476	1757	1986
Boiler flue gas exhaust diameter*	Ø mm	250	300	300	300	300
Boiler flue gas exhaust height H	mm	1285	1300	1705	1705	1710
Chimney draught	Pa	34	38	42	45	50
Inlet/outlet	R/DN	2"	2"	80	80	80
Filling/draining	G	1"	1"	1"	1"	1"
Safety line	R/DN	6/4"	6/4"	40	40	40
Max. operat. temperature	°C	100	100	100	100	100
Max. operat. pressure	bar	4	4	4	4	4
Total depth of the body A	mm	1590	1980	2000	2350	2350
Total height of the body B	mm	1600	1600	2100	2100	2100
Total width of the body C	mm	815	815	920	920	1065
Height of the inlet line D	mm	1600	1600	2100	2100	2100
Height of the outlet line E	mm	250	250	250	250	250
Height of the safety outlet line F	mm	500	500	500	500	500
Height filling/draining G	mm	155	155	155	155	155
Dimension I/J	mm	990x745	1390x745	1390x850	1740x850	1740x995
Combustion chamber dimension	mm	450x385	450x385	500x590	500x590	600x585
Max. log length	mm	600	1000	1000	1350	1350



ADAPTABLE

Designed for combustion with several types of solid fuels (wood, coal ...).



EFFICIENT

Properly dimensioned chamber and the control of combustion gases in three passages ensure a high degree of boiler utilization.



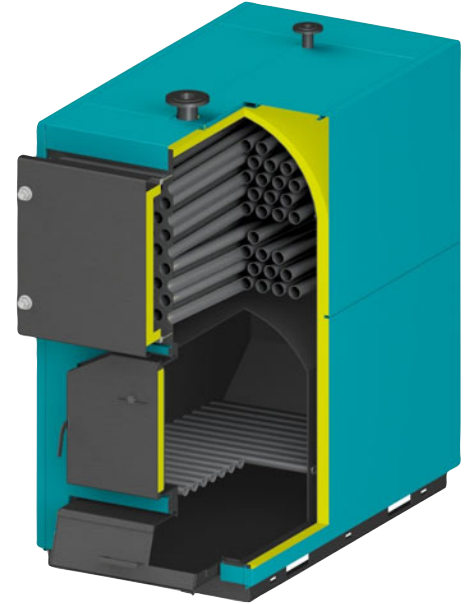
VERSATILE

Large doors and boiler furnaces allow firing with solid solid fuel and easy cleaning and maintenance.



INSTALLATION

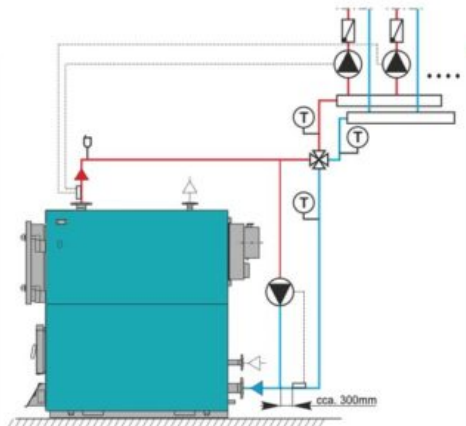
A separate body of the boiler is supplied, with a separate thermalinsulation panel, allowing easy transportation and installation.



DELIVERY, OBLIGATORY AND OPTIONAL ADDITIONAL EQUIPMENT:

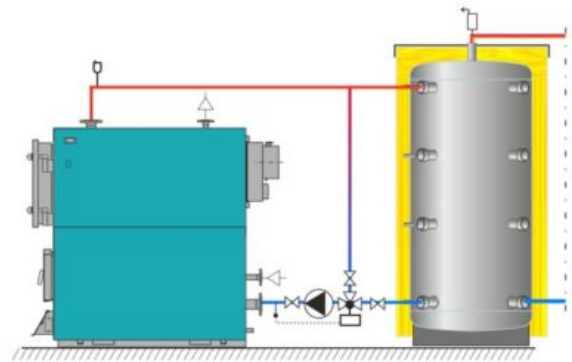
Delivery:

- Boiler body with the boiler door;
- Outer casing with thermal insulation, a thermometer, draught regulator, cleaning accessories (scraper, brush, accessories holder)



Connection to the heating system:

- Safety boiler pump and heat pump thermostat (0-65°C);
- Manual 4-way mixing valve
- Open expansion vessel



Connection to the heating system with CAS accumulation tank (recommended)

- Boiler pump;
- 3-way mixing valve with the motor actuator with controller (as ESBE CRA)
- CAS accumulation tank (min. 30 l/kW)
- open expansion vessel

Possible additional equipment:

- cyclone with the fan and controller